

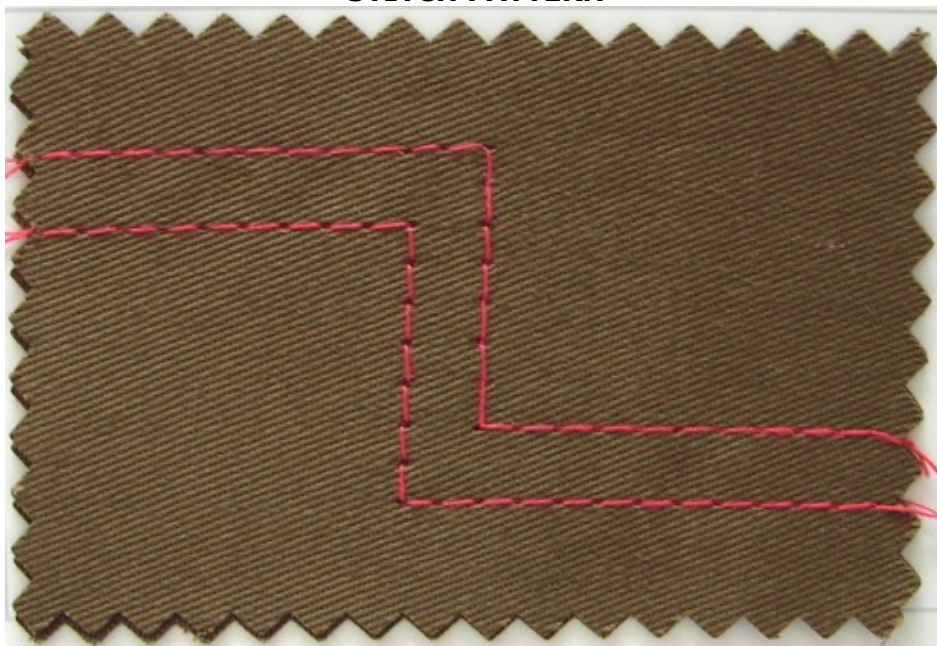
# HIGH-SPEED TWIN-NEEDLE SPLIT NEEDLE BAR LOCKSTITCH SEWING MACHINE

## ZJ845



Have structure of twin-needle split needle bar it's very convenient to make corner seam as well. Feeding in phase needle bar and feed dog is helpful for wonderful and nice stitch Against any glide of materials. Suitable for lady's underwear, jeans, overcoat etc, decoration and corner seam inclusive.

### STITCH PATTERN



											
ZJ845	DPx5	5	7-13	*	6.4	*	*	*	3000	635x265x608	52/50
ZJ845-5	DPx5	5	7-13	*	6.4	*	*	*	3000	635x265x608	52/50

### AKA Sewing Machines

95-080 Tuszyn, Mickiewicza 44, POLAND  
 Phone: (+48) 042 6142541 , Fax: (+48) 042 6142540, Mobile: 0 505 113803  
[http: www.aka.net.pl](http://www.aka.net.pl) , e-mail: [aka@aka.net.pl](mailto:aka@aka.net.pl)